



## Understanding Platinum SQL

Platinum SQL is the top of the line Tabs3 and PracticeMaster product. It includes all of the features found in Platinum: Accelerators, HotBackup, Auto Recovery, Log Off User and eNotes. For more information on these features, visit [www.Tabs3.com/Platinum](http://www.Tabs3.com/Platinum). Platinum SQL also includes the following performance and data access enhancements that you can only find in Platinum SQL.

**Platinum SQL supports 64-bit servers, which allow you faster data access.** The native 64-bit database server software in Platinum SQL will utilize 64-bit server capabilities for faster data access. In comparison, the standard Platinum server software is a 32-bit application. It will run on a 64-bit Windows server, but it is still subject to 32-bit memory limitations.

For example, a 64-bit Windows server with 128 GB of physical memory can only allocate up to 4GB to the standard Platinum Server software for caching purposes. You can significantly boost your performance by caching frequently used data and index files in memory. Firms will often require more than 4GB when managing large amounts of data and running complex reports and filters. Because Platinum SQL is a 64-bit application, it is not subject to the 4GB limitation of the 32-bit server software, thus allowing you to take full advantage of your server's memory – in this case, 128 GB<sup>1</sup>.

*Example on a 64-bit Windows Server with 128GB of physical memory*

|                     | Native Database Server | Allowable Cache    |
|---------------------|------------------------|--------------------|
| Platinum Server     | 32-bit                 | Restricted to 4 GB |
| Platinum SQL Server | 64-bit                 | 128 GB             |

**Platinum SQL allows you to run SQL queries on the Tabs3 and PracticeMaster database in MS SQL Server.** SQL stands for Structured Query Language. It was developed by IBM in the early 1970s to enable ad-hoc queries of data without writing new programs. For decades it has allowed users to access database information without understanding the internal file structure of the databases. From the beginning, easy access was the goal of this language, not performance.

Platinum SQL, like other Tabs3 and PracticeMaster products, uses the FairCom c-tree database that is optimized for performance. MS SQL Server is not required to run Platinum SQL, however Platinum SQL does maintain a set of SQL tables that link to the Tabs3 and PracticeMaster data and are accessible using SQL queries. This allows you to read the Tabs3 and PracticeMaster data from Microsoft Access, Crystal Reports, Microsoft SQL Server, etc., using OLE DB (another data access standard) and ODBC, while still maintaining solid performance within the software itself. To maintain the integrity of Tabs3 and PracticeMaster data, access is limited to reading of data. You cannot write directly to the Tabs3 and PracticeMaster database from other programs.

**Platinum SQL includes accelerated ODBC processing.** One of the standard benefits of any client server product like Platinum is improving performance by using the server more, and using workstation computers and the network less. The standard ODBC driver for single user, multi-user and Platinum versions of Tabs3 and PracticeMaster processes all queries at the workstation. That means all of the data is sent to the workstation via the network and then filtered based on the query. With Platinum SQL, all queries are processed at the server, and only the results are returned over the network. Sending all of that data across the network takes a lot of time, and it increases the load on your network. In general, the server is also much faster than a workstation computer. This leads to ODBC operations in Platinum SQL that are typically 10 to 30 times faster than they would be in single user, multi-user or Platinum versions of Tabs3 and PracticeMaster. For example, a query that used to take five minutes in Platinum, may take as few as 15 seconds (20 times faster) in Platinum SQL.

1. Your operating system can also limit the size of your cache. This varies by operating system



In addition to faster ODBC queries, **Platinum SQL also includes ODBC access for every user at a firm and ODBC drivers for both 32-bit and 64-bit programs.** The standard ODBC driver for single user, multi-user and Platinum versions is purchased per workstation. The ODBC driver included with the Platinum SQL software allows ODBC access for everyone at the firm, giving more people easy access to reports and excel spreadsheets that use ODBC to update data. The SQL ODBC driver included with the Platinum SQL software is available in both 64-bit and 32-bit versions. This allows you to access the Tabs3 and PracticeMaster database from 64-bit programs like 64-bit Microsoft Excel® as well as 32-bit programs like Crystal reports and 32-bit Excel. Users with 64-bit workstations can install both drivers.

**Platinum SQL also provides more detailed access rights for ODBC users.** You can grant ODBC access rights to users by product with Platinum SQL. For example, one user can have rights to the Tabs3 billing data files without having access rights to the General Ledger (GLS) data files. This gives you greater control over what information each user can access. Keep in mind that any user who has ODBC access rights to files has rights to all records. The built-in security features available in Tabs3 and PracticeMaster, including secure clients, private calendar records, and assigned timekeepers, do not prevent access to the individual Tabs3 and PracticeMaster records in the database, regardless of which version of Tabs3 and PracticeMaster you are using.

**The Platinum SQL software also includes two utilities for monitoring server usage and performance.** These utilities can be run from any computer in the firm.

1. **Monitor** shows you active connections, open files, and cache statistics for individual files that may be useful when optimizing your environment.

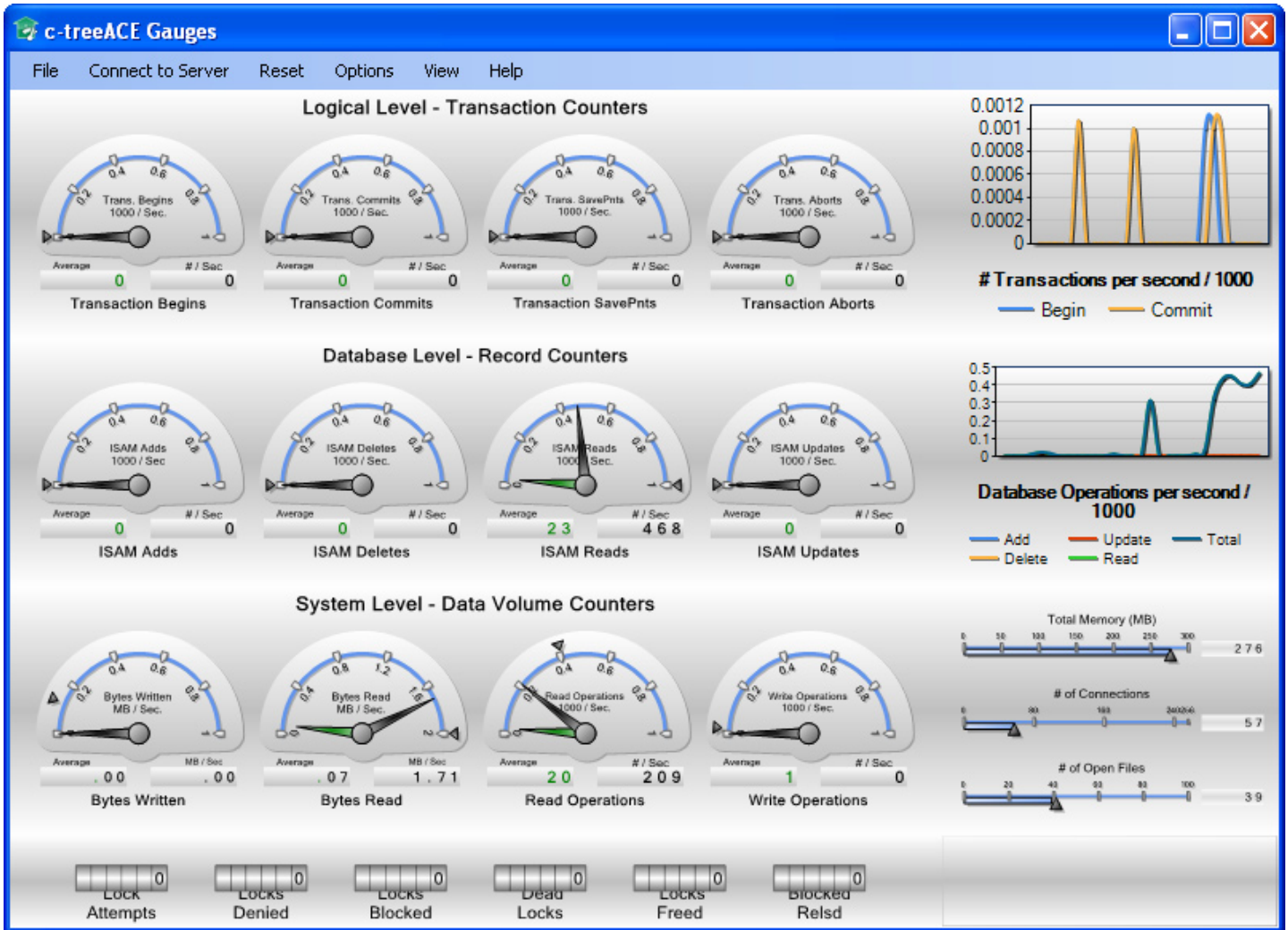
The screenshot shows the 'c-treeACE Monitor (STI\_SERVER@SERVER)' window. It has a menu bar with 'Server', 'Options', 'Tools', and 'Help'. Below the menu bar are buttons for 'Stop Server', 'Quiesce Server', and a refresh icon. The main area contains several tabs: 'IO Performances', 'Function Timing', 'System Monitor', and 'Replication'. Under 'System Monitor', there are sub-tabs: 'Active Connections', 'Files / Locks', 'Files Stats', 'Files History', 'System Snapshot', 'User Snapshot', 'Sql Snapshot', 'Snapshot Favorites', and 'System Configuration'. The 'Active Connections' sub-tab is selected, displaying a table of active connections.

| Task # | User    | Client IP Address | Node ID Info          | Last    | Active | Last Request Time    | Logon Time             | Files | Memory |
|--------|---------|-------------------|-----------------------|---------|--------|----------------------|------------------------|-------|--------|
| 58     | STADMIN | 192.168.200.61    | 5568   \PHIL   P...   | CLIFIL  | no     | 8/18/2011 3:05:48 PM | 8/18/2011 8:25:38 AM   | 0     | 604512 |
| 57     | STADMIN | 192.168.200.62    | 5558   \GREG   ...    | CLIFIL  | no     | 8/18/2011 3:04:20 PM | 8/18/2011 8:19:11 AM   | 0     | 633616 |
| 56     | STADMIN | 192.168.200.136   | 5724   \ROBER...      | CLIFIL  | no     | 8/18/2011 3:07:21 PM | 8/18/2011 2:16:41 PM   | 0     | 601888 |
| 55     | STADMIN | 192.168.200.194   | 5651   \SCOTT...      | CLIFIL  | no     | 8/18/2011 3:07:18 PM | 8/18/2011 12:57:06 ... | 0     | 627424 |
| 54     | STADMIN | 192.168.200.135   | 5548   \DOUG   ...    | CLIFIL  | no     | 8/18/2011 3:05:18 PM | 8/18/2011 8:10:15 AM   | 0     | 601760 |
| 53     | STADMIN | 192.168.200.235   | 5544   \BRUCE ...     | CLIFIL  | no     | 8/18/2011 3:04:24 PM | 8/18/2011 8:09:11 AM   | 0     | 628672 |
| 52     | STADMIN | 192.168.200.205   | 5536   \BRAND...      | CLIFIL  | no     | 8/18/2011 3:06:26 PM | 8/18/2011 8:06:08 AM   | 2     | 634664 |
| 51     | STADMIN | 192.168.200.138   | 5534   \VALICIA   ... | CLSICON | no     | 8/18/2011 3:05:48 PM | 8/18/2011 8:05:46 AM   | 12    | 644448 |
| 50     | STADMIN | 192.168.200.110   | 4640   \RECEP...      | CLSICON | no     | 8/18/2011 3:08:15 PM | 8/15/2011 8:07:48 AM   | 23    | 661336 |

At the bottom of the window, a status bar shows: 'Ready | Connected as : STADMIN | Total Connections = 57 ( SQL = 0 - ISAM = 57 ) | Last Update Time : 8/18/2011 3:08:42 PM'.



- Gauges** displays a wide array of performance metrics for the Platinum Server such as the number of transactions per second, the load file on the system and the number of records read, added and updated per second.



All of these features make Platinum SQL the top of the line Tabs3 and PracticeMaster product. For more information on Platinum or Platinum SQL, contact your local reseller or consultant, or our Sales Department at [sales@tabs3.com](mailto:sales@tabs3.com).



**Summary of who should be interested in Platinum SQL**

|  | Platinum | Platinum SQL |
|--|----------|--------------|
| Firm has 32-bit server hardware or Operating System  | ✓        |              |
| Firm uses ODBC to access the Tabs3 / PracticeMaster database   | ✓        | ✓            |
| Firm uses ODBC and would like accelerated ODBC performance   |          | ✓            |
| Firm has large Tabs3 / PracticeMaster data set or large number of users and would like to utilize 64-bit server processor and memory |          | ✓            |
| Firm wants to use Office 2010 64-bit (or any other 64-bit program) to access the data via the ODBC driver                            |          | ✓            |
| Firm wants to use MS SQL Server to query the Tabs3 / PracticeMaster database   |          | ✓            |
| Firm would like to utilize database engine performance dashboards  |          | ✓            |

*“ My clients are excited about and thankful for the productivity gains they have realized with Tabs3 and PracticeMaster Platinum SQL. The raw power of Platinum SQL’s 64 bit processing and its ability to use up to 200 GB of server memory for caching data and indexes has made most user procedures instantaneous. Report times have been slashed, even beyond the gains realized with the report accelerators in normal Platinum processing. My clients use their existing SQL tools and Crystal Reports to directly access Tabs3 data via Platinum SQL. ”*

*Tabs3 and PracticeMaster Platinum SQL allows for sophisticated reporting for large data sets on busy networks. They can also upload merged Tabs3 and third party information to a variety of hosts via web app front ends and third party APIs.*

*In short, the Tabs3 and PracticeMaster product line can now, via Platinum SQL, synergistically co-exist within a large firm’s IT systems, from simple homogeneous components to mixed architectures including Microsoft SQL, Crystal Reports and multiple third party APIs.*

**Dominic Morinelli**  
Computer Network Services